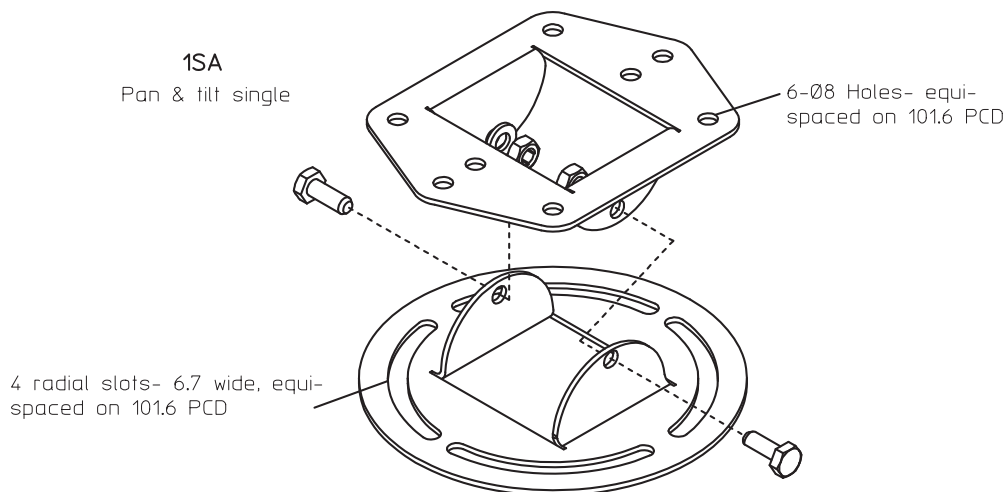
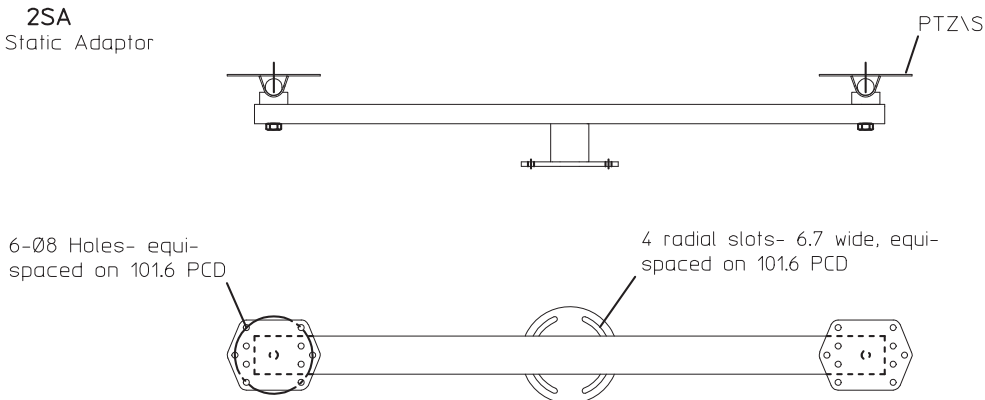


All dimensions in mm unless otherwise stated

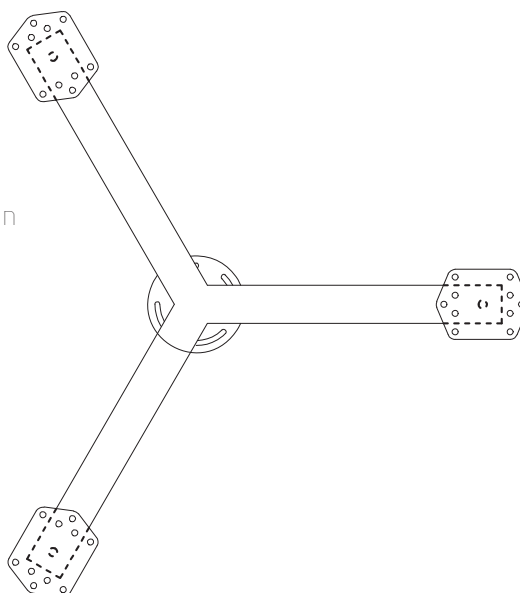


2SA
Twin Static Adaptor



3SA
Triple Static Adaptor

Also available in a "3-in-line" version



Standards Applicable

General Steelwork:

BS 1449:1991, BS 1387:1985
BS EN 10025:1993

Structural Steelwork:

BS EN 10210-1:1994
BS EN 10210-2:1997

Hot Dipped Galvanized:

BS EN ISO 1461:2009

Welding Procedures:

Comply with BS EN 1011-2:2001

Fasteners:

Grade 8.8 BS 3692:2001
BS 4190:2001 DIN931, DIN934

Design Wind Loading:

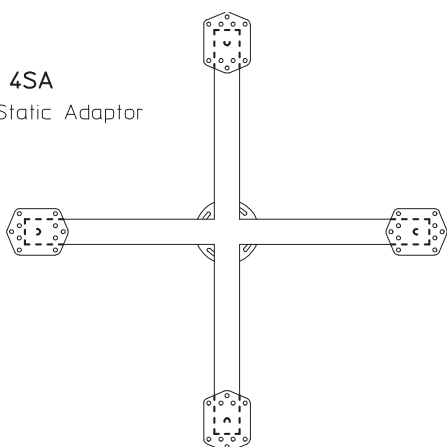
In accordance with CP3 chapter
V Pt 2 & BS 6399 Pt 2:1997

Paint finishes:

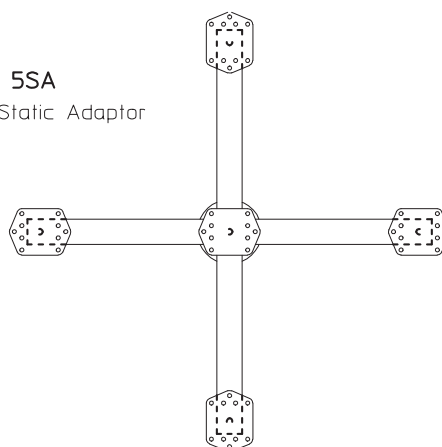
BS 4800 & RAL colour range

All WEC products are subject to ongoing development. Therefore, we reserve the right to make technical modifications without notice.
BRITANNIA HOUSE, JUNCTION STREET, DARWEN, LANCASHIRE, BB3 2RB. TEL: (01254) 700200. FAX: (01254) 873637. E-MAIL: all@wec.uk.net

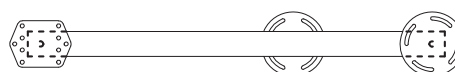
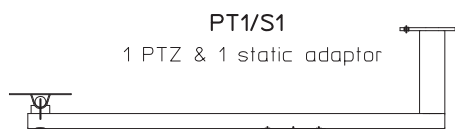
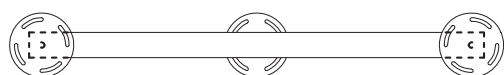
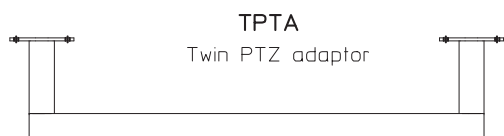
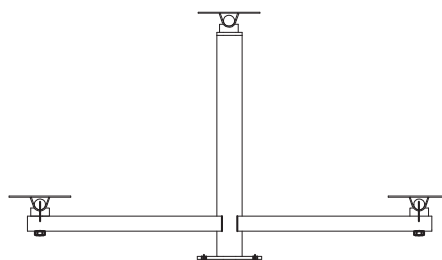




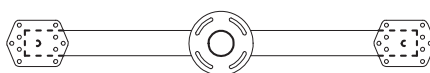
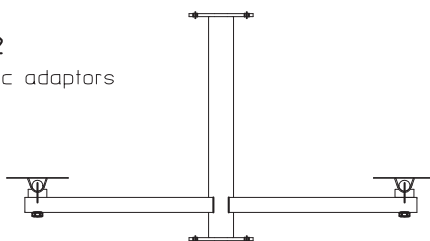
5SA
5 Way Static Adaptor



Also available in a "4-in-line" version



PT1/S2
1 PTZ & 2 static adaptors



All dimensions in mm unless otherwise stated

Standards Applicable

General Steelwork:
BS 1449:1991, BS 1387:1985
BS EN 10025:1993

Structural Steelwork:
BS EN 10210-1:1994
BS EN 10210-2:1997

Hot Dipped Galvanized:
BS EN ISO 1461:2009

Welding Procedures:
Comply with BS EN 1011-2:2001

Fasteners:
Grade 8.8 BS 3692:2001
BS 4190:2001 DIN931, DIN934

Design Wind Loading:
In accordance with CP3 chapter
V Pt 2 & BS 6399 Pt 2:1997

Paint finishes:
BS 4800 & RAL colour range